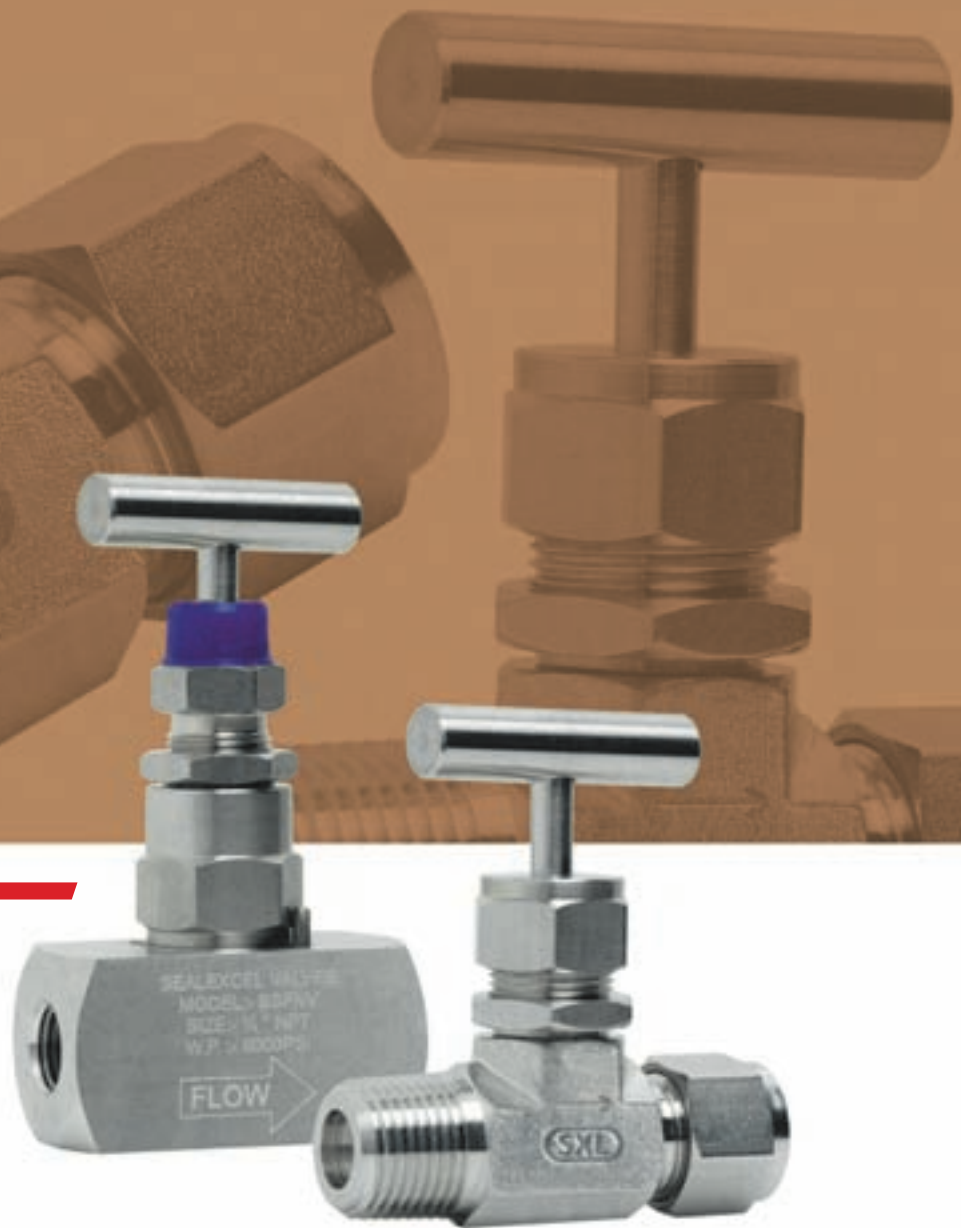


Forged & Bar Stock Body Needle Valves



Make the leak free connections with Sealexcel products at economical price.

INSTRUMENTATION NEEDLE VALVES

SEALEXCEL® Forged Body Needle Valves provide flexibility when designing miniaturized or piping system upto ½" pipe or Tube Connection.

Available with Fine-Lok™ / Well-Lok™ Tube Fittings. NPT/BSPT Male or Female, threads connection suitable for Instrumentation, process tubing, Hydraulic application etc.

FEATURES

- Available in material SS316
- Available in Straight and Angle Style
- Panel Mounting Standard
- PTFE Stem Packing are standard
- Flow Coefficient (Cv) from 0.37 to 1.8
- Orifice sizes : 0.172" (4.4mm), 0.250" (6.4mm), 0.312" (8mm), 0.375" (9.5mm).
- Pressure upto 5000 PSIG

STEM :-

SEALEXCEL® Needle Valves are available with choice of optional stem to provide greater flexibility.

Non-Rotating (NR) :-

This Standard self centering non rotating valve seat typically used in high cycle application to extend the valve life. It is designed to prevent galling between the seat and stem.

V-Stem (VS) :-

V-Stem tip used for general purpose liquid and gases.

Soft Seat (SS) :-

A soft seat stem requires a lower sealing torque, the soft seat is replaceable. It is suitable for temperature upto 120°C

Regulating Stem (RS) :-

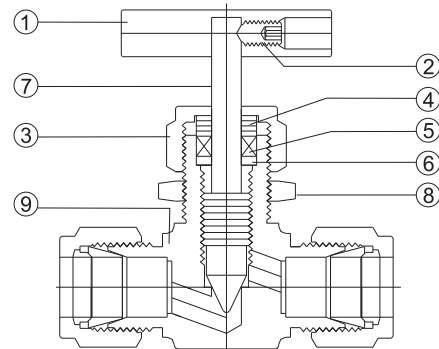
It is used where some degree of flow control is required.

TECHNICAL DATA :-

The Temperature and Pressure rating for a standard valve with PTFE packing

Temperature	Pressure	
	psig	bar
-54°C to 38°C	5000	340
-54°C to 93°C	4295	292
-54°C to 148°C	3875	264
-54°C to 176°C	3715	254
-54°C to 204°C	3560	242
-54°C to 232°C	3435	234

MATERIAL OF CONSTRUCTIONS



Sr.No.	VALVE BODY MATERIAL
1	Bar Handle - SS316
2	Set Screw - SS316
3	Packing Nut - SS316
4	Upper Gland - SS316
5	Packing - PTFE
6	Lower Gland - SS316
7	Stem - SS316
8	Panel Nut - SS316
9	Forged Body - SS316

ORDERING INFORMATION

Add a stem type and code to the basic ordering number

Example : GNV-250/NR
MMNV - 250N/VS

AVAILABLE SIZES

Fractional Size :-

Upto 1/2" pipe or Tube Connections

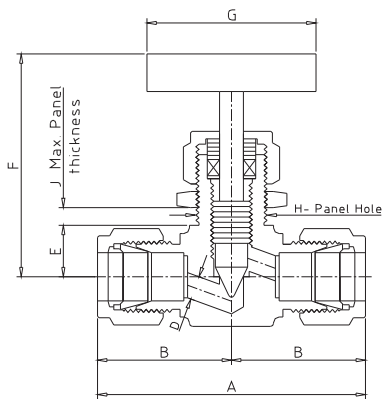
Metric size :-

Upto 12mm Tube Connection

Pipe Thread Description

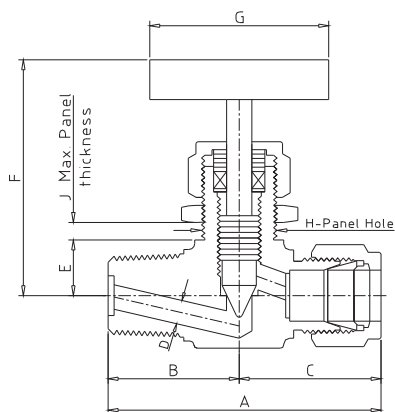
Code	Pipe Thread	Specification
N	NPT	ANSI B1.20.1
RT	BSPT	BS21, ISO 7/1
RG	BSPP	ISO 228/1, BS 2779

GNV Series NEEDLE VALVES



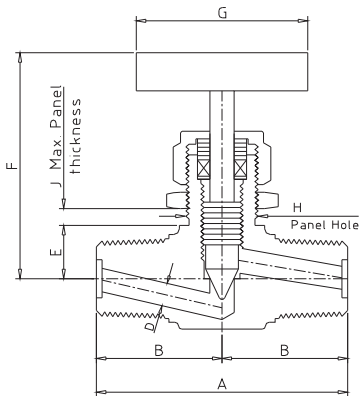
Connection Size		Dimensions in mm									Cv	Part No.
Inlet Tube OD	Outlet Tube OD	A	B	D	E	F	G	H	J			
1/4"	1/4"	57.6	28.8	4.4	11.2	52.3	38.0	13.5	4.2	0.37	GNV-250	
3/8"	3/8"	66.6	33.3	6.4	14.0	57.0	50.0	19.8	6.4	0.73	GNV-375	
1/2"	1/2"	71.2	35.6	6.4	14.0	57.0	50.0	19.8	6.4	0.73	GNV-500	
6 MM	6MM	57.6	28.8	4.4	11.2	52.3	38.0	13.5	4.2	0.37	GNV-6M	
8 MM	8MM	59.4	29.7	4.4	11.2	52.3	38.0	13.5	4.2	0.37	GNV-8M	
10 MM	10MM	66.6	33.3	6.4	14.0	57.0	50.0	19.8	6.4	0.73	GNV-10M	
12 MM	12MM	71.2	35.6	6.4	14.0	57.0	50.0	19.8	6.4	0.73	GNV-12M	

MTNV Series NEEDLE VALVES



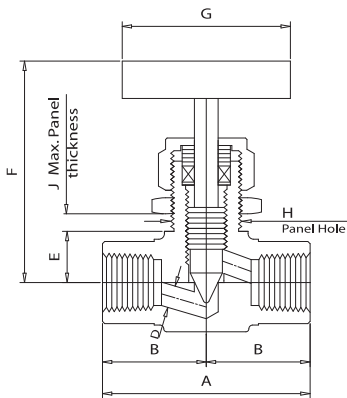
Connection Size		Dimensions in mm									Cv	Part No.
Inlet Male NPT	Outlet Tube OD	A	B	C	D	E	F	G	H	J		
1/4"	1/4"	53.8	25.0	28.8	4.4	11.2	52.3	38.0	13.5	4.2	0.37	MTNV-250-250N
1/4"	3/8"	61.9	28.6	33.3	6.4	14.0	57.0	50.0	19.8	6.4	0.73	MTNV-250-375N
3/8"	3/8"	61.9	28.6	33.3	6.4	14.0	57.0	50.0	19.8	6.4	0.73	MTNV-375-375N
3/8"	1/2"	64.2	28.6	35.6	6.4	14.0	57.0	50.0	19.8	6.4	0.73	MTNV-375-500N

MMNV Series NEEDLE VALVES



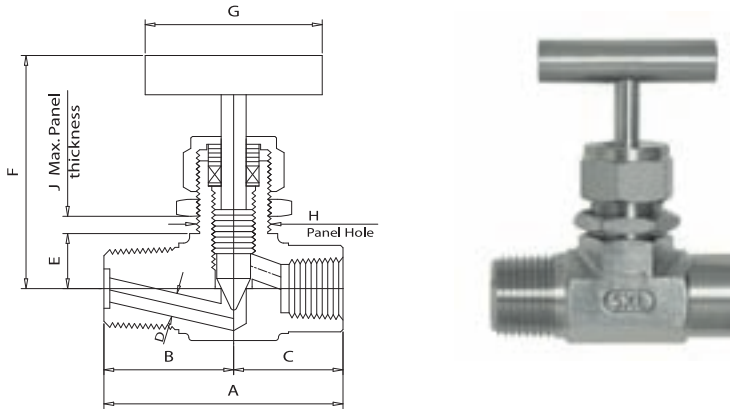
Connection Size		Dimensions in mm									Cv	Part No.
Inlet Male NPT	Outlet Male NPT	A	B	D	E	F	G	H	J			
1/8"	1/8"	42.0	21.0	4.4	11.2	52.3	32.0	13.5	4.2	0.37	MMNV-125N	
1/4"	1/4"	50.0	25.0	6.4	14.0	57.0	38.0	13.5	6.4	0.73	MMNV-250N	
3/8"	3/8"	57.2	28.6	6.4	14.0	57.0	50.0	19.8	6.4	0.73	MMNV-375N	
1/2"	1/2"	66.0	33.0	8.0	14.0	57.0	50.0	19.8	6.4	1.20	MMNV-500N	

FFNV Series NEEDLE VALVES



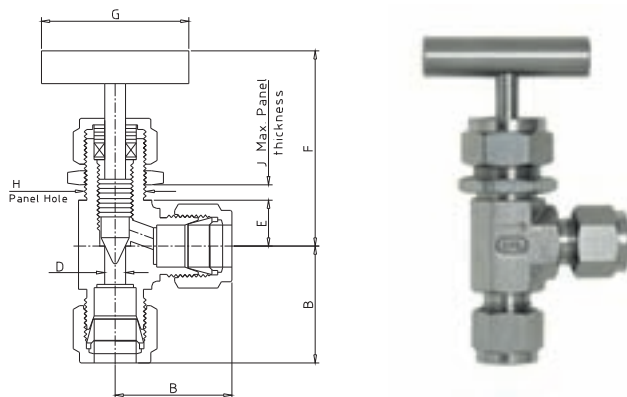
Connection Size		Dimensions in mm									Cv	Part No.
Inlet Female NPT	Outlet Female NPT	A	B	D	E	F	G	H	J			
1/8"	1/8"	42.0	21.0	4.4	11.2	52.3	32.0	13.5	4.2	0.37	FFNV-125N	
1/4"	1/4"	54.0	27.0	6.4	14.0	57.0	38.0	19.8	6.4	0.73	FFNV-250N	
3/8"	3/8"	54.0	27.0	6.4	14.0	57.0	50.0	19.8	6.4	0.73	FFNV-375N	
1/2"	1/2"	76.2	38.1	9.5	19.1	100	50.0	26.2	6.4	1.80	FFNV-500N	

MFNV Series NEEDLE VALVES



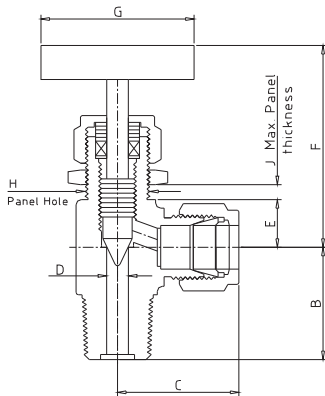
Connection Size		Dimensions in mm										Part No.
Inlet Male NPT	Outlet Female NPT	A	B	C	D	E	F	G	H	J	Cv	
1/4"	1/4"	55.6	27.2	28.4	6.4	14.0	57.0	50.0	19.8	6.4	0.73	MFNV-250-250N
1/2"	1/2"	76.2	38.1	38.1	9.5	19.5	100	76.0	26.2	6.4	1.80	MFNV-500-500N

GANV Series ANGLE NEEDLE VALVES



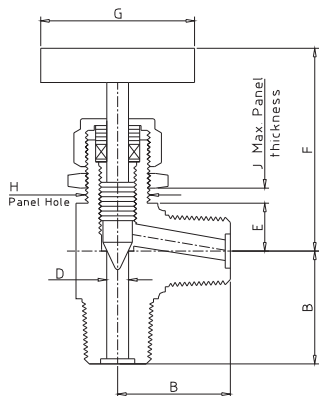
Connection Size		Dimensions in mm								Part No.
Inlet Tube OD	Outlet Tube OD	B	D	E	F	G	H	J	Cv	
1/4"	1/4"	28.8	4.4	11.2	52.3	38.0	13.5	4.2	0.37	GANV-250
3/8"	3/8"	33.3	6.4	14.0	57.0	50.0	19.8	6.4	0.73	GANV-375
1/2"	1/2"	35.6	6.4	14.0	57.0	50.0	19.8	6.4	0.73	GANV-500
6 MM	6 MM	28.8	4.4	11.2	52.3	38.0	13.5	4.2	0.37	GANV-6M
8 MM	8 MM	29.7	4.4	11.2	52.3	38.0	13.5	4.2	0.37	GANV-8M
10 MM	10 MM	33.3	6.4	14.0	57.0	50.0	19.8	6.4	0.73	GANV-10M
12 MM	12 MM	35.6	6.4	14.0	57.0	50.0	19.8	6.4	0.73	GANV-12M

MTANV Series ANGLE NEEDLE VALVES



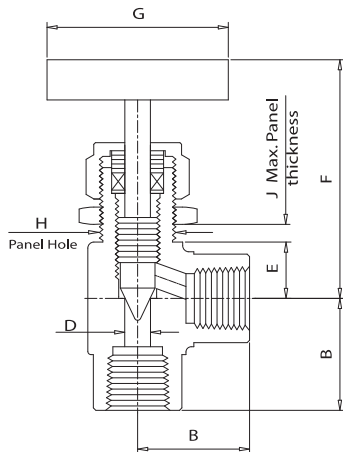
Connection Size		Dimensions in mm									Part No.
Inlet Male NPT	Outlet Tube OD	B	C	D	E	F	G	H	J	Cv	
1/4"	1/4"	25.0	28.8	4.4	11.2	52.3	38.0	13.5	4.2	0.37	MTANV-250-250N
1/4"	3/8"	28.6	33.3	6.4	14.0	57.0	50.0	19.8	6.4	0.73	MTANV-250-375N
3/8"	3/8"	28.6	33.3	6.4	14.0	57.0	50.0	19.8	6.4	0.73	MTANV-375-375N
3/8"	1/2"	28.6	35.6	6.4	14.0	57.0	50.0	19.8	6.4	0.73	MTANV-375-500N

MMANV Series ANGLE NEEDLE VALVES



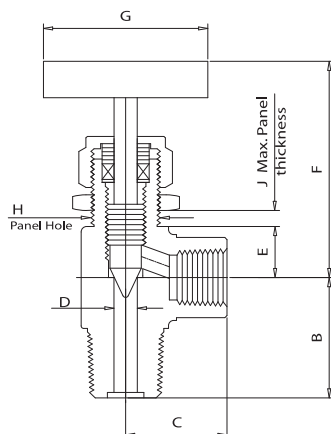
Connection Size		Dimensions in mm									Part No.
Inlet Male NPT	Outlet Male NPT	B	D	E	F	G	H	J	Cv		
1/8"	1/8"	21.0	4.4	11.2	52.3	32.0	13.5	4.2	0.37	MMANV-125N	
1/4"	1/4"	25.0	6.4	14.0	57.0	38.0	13.5	6.4	0.73	MMANV-250N	
3/8"	3/8"	28.6	6.4	14.0	57.0	50.0	19.8	6.4	0.73	MMANV-375N	
1/2"	1/2"	33.0	8.0	14.0	57.0	50.0	19.8	6.4	1.20	MMANV-500N	

MFNV Series NEEDLE VALVES



Connection Size		Dimensions in mm								Part No.
Inlet Female NPT	Outlet Female NPT	B	D	E	F	G	H	J	Cv	
1/8"	1/8"	21.0	4.4	11.2	52.3	32.0	13.5	4.2	0.37	FFANV-125N
1/4"	1/4"	27.0	6.4	14.0	57.0	38.0	19.8	6.4	0.73	FFANV-250N
3/8"	3/8"	27.0	6.4	14.0	57.0	50.0	19.8	6.4	0.73	FFANV-375N
1/2"	1/2"	38.1	9.5	19.1	100	50.0	26.2	6.4	1.80	FFANV-500N

MTNV Series NEEDLE VALVES



Connection Size		Dimensions in mm								Part No.	
Inlet Male NPT	Outlet Female NPT	B	C	D	E	F	G	H	J		Cv
1/4"	1/4"	28.4	27.0	6.4	14.0	57.0	38.0	19.8	6.4	0.73	MFANV-250-250N
1/2"	1/2"	38.1	38.1	9.5	19.1	100	50.0	26.2	6.4	1.80	MFANV-500-500N

INSTRUMENTATION NEEDLE VALVE

SEALEXCEL® Bar Stock Needle Valves are design and Manufactured to meet the requirements of Corrosive service, High Pressure Sampling systems, Sour Gas application etc.

FEATURES

- Available in material SS316 conform to NACE MR01-75
- Bar Stock Body
- PTFE Stem Packing are Standard
- Self Centering Non-Rotating Valve Seat
- Standard Seat - SS316 Seat to SS316 Body
Optional : Stellite SS316 Seat to SS316 Body, Hastelloy-C Seat to SS316 Body
- Male and Female NPT or BSPT/BSP, Socket Weld connections.
- Orifice Size : 0.172" (4.4mm) to 0.312" (8mm)

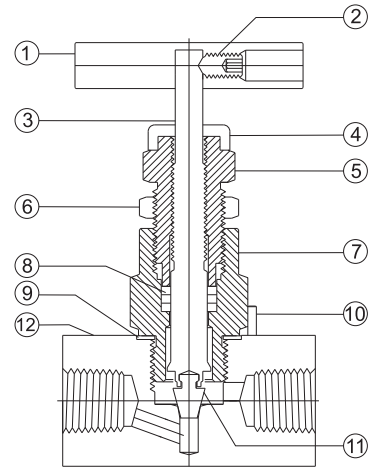
OPERATING PARAMETERS

Working Pressure : Upto 6000 PSI
Working Temperature : Upto 232°C

AVAILABLE SIZES

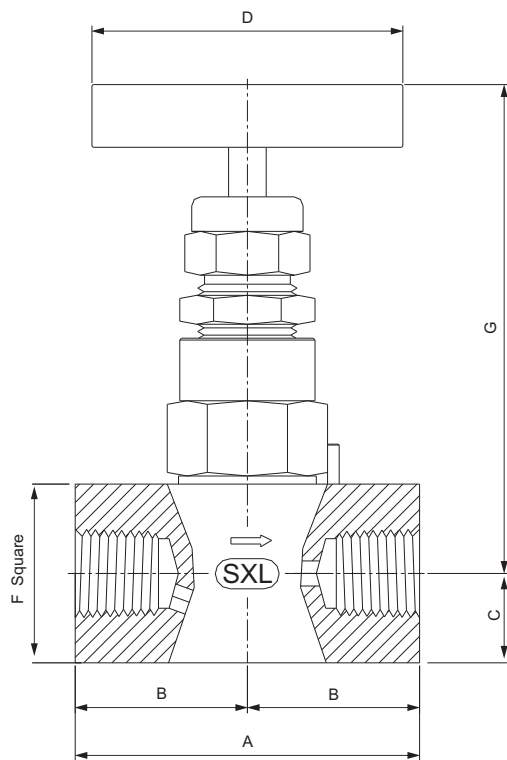
Upto 1" NPT or BSPT
or BSPP Female Pipe thread

MATERIAL OF CONSTRUCTIONS



Sr.No.	VALVE BODY MATERIAL
1	Bar Handle - SS316
2	Set Screw - SS316
3	Stem - SS316
4	Dust Seal Cap - Polypropylene
5	Upper Gland Body - SS316
6	Lock Nut - SS316
7	Lower Gland Body - SS316
8	Packing - PTFE
9	Washer - SS316
10	Locking Pin - SS316
11	Needle Tip - SS316
12	Valve Body - SS316

BSFNV Series BAR STOCK NEEDLES VALVES



Connection Size		Orifice		Dimensions in mm												Part No.
Inlet NPT-F	Outlet NPT-F	mm	in	A		B		C		D		F		G		
1/4"	1/4"	4.4	0.173	70	2.76	35.0	1.38	15.0	0.59	64.0	2.52	30.0	1.18	100	3.94	BSFNV-250N
3/8"	3/8"	7.0	0.276	65	2.56	32.5	1.28	15.0	0.59	64.0	2.52	30.0	1.18	100	3.94	BSFNV-375N
1/2"	1/2"	7.0	0.276	72	2.83	36.0	1.42	15.0	0.59	64.0	2.52	30.0	1.18	100	3.94	BSFNV-500N
3/4"	3/4"	10.0	0.394	82	3.23	41.0	1.62	20.0	0.79	82.0	3.23	40.0	1.57	125	4.80	BSFNV-750N
1"	1"	10.0	0.394	89	3.50	44.5	1.75	25.0	0.99	82.0	3.23	50.0	1.97	130	5.0	BSFNV-1000N

BSWNV Series BAR STOCK SOCKET WELD NEEDLE VALVES

Connection Size		Orifice		Dimensions in mm												Part No.
Inlet Socket weld	Outlet Socket weld	mm	in	A		B		C		D		F		G		
1/2"	1/2"	10	0.394	82.0	3.23	41.0	1.62	20	0.79	82.0	3.23	40.0	1.57	122.0	4.80	BSWNV-500

.ISO. COMPONENTER

- A QUALITY CONNECTION -

*Iso Componenter AB
Box 73
218 36 Bunkeflo/Malmö*

*Tel:
040 - 51 03 50*

*Fax:
040 - 51 02 49*

*Web:
www.isocomponenter.se*

*Mail:
w@isocomponenter.se*